

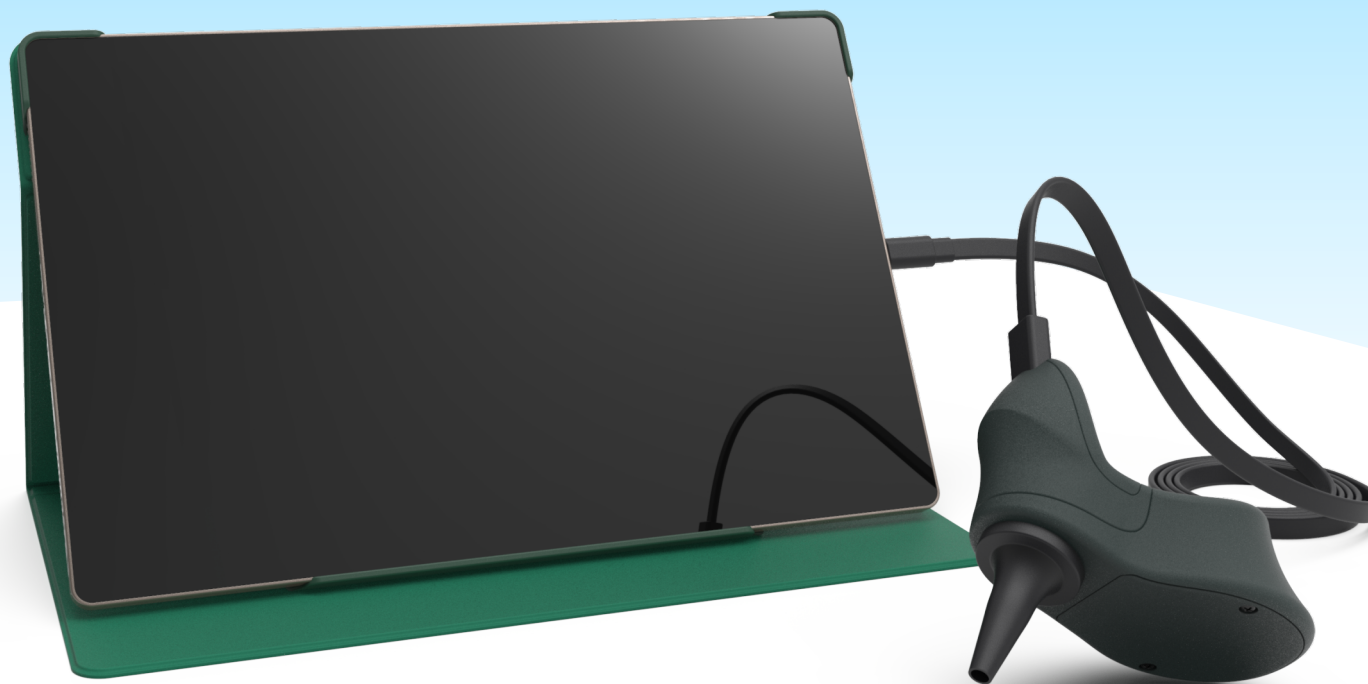
QUICK GUIDE

Ear Penguin TAB

TAB-001-H

Sibbo MD App

APP-001-H



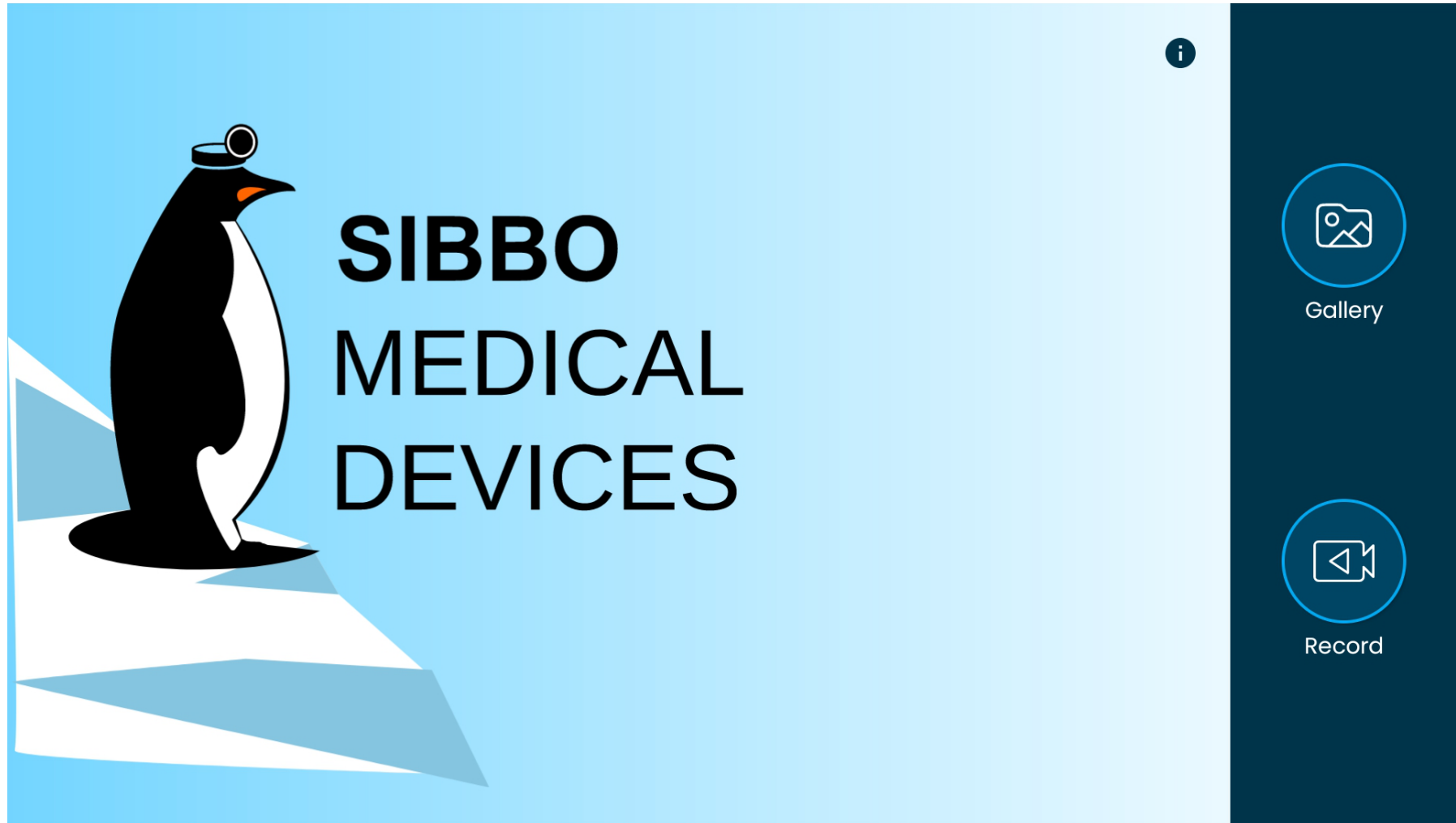
SIBBO MD APP - HOW TO GET STARTED

- You can use the Sibbo MD App offline, but if you want to share your recordings you need to have a network connection (wifi). Preinstalled tablets come with no default accounts. Sharing recordings is easier if you add your own account beforehand (Settings -> Accounts and backup -> Add account).
- We recommend using only cyber secure sharing apps approved by your local authorities. You can download desired sharing apps from the "Google Play" store.
- For security reasons we strongly recommend that you change the default PIN 0000 before taking the device to clinical use (Settings -> Lock screen -> Screen lock type).
- Open the tablet, connect the Ear Penguin, and start the Sibbo MD App.



HOME VIEW

From the Home view you can access previous recordings (Gallery) or Live-view (Record). Intended use and CE classification of this Sibbo MD App can be found by pressing the i-icon.



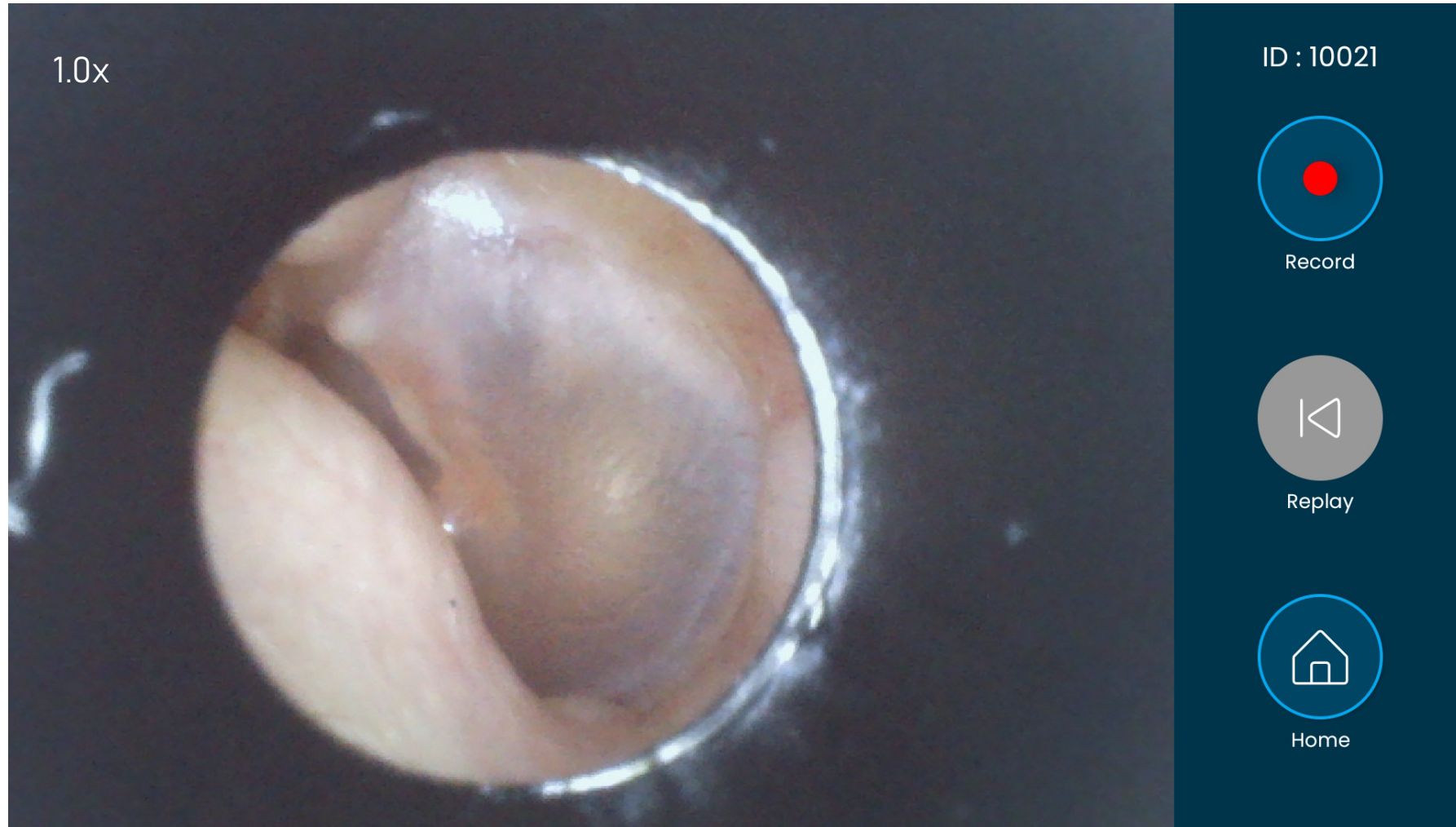
LIVE VIEW & RECORDING

Every recording is given a specific ID number shown also in the Gallery.

Recording stops automatically after 15 sec or you can stop it earlier if you wish.

With "Replay" you can view the last recording. Other recordings are found in the Gallery.

You can pinch to zoom (1.0x - 3.0x) with your fingers.

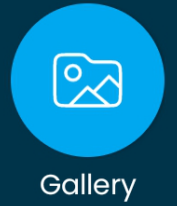


GALLERY

Every recording is stored in the Gallery. In the Gallery you can view and manage recordings and images.

Sibbo Gallery

- ID: 10017**
Videos: 1
Images: 1
- ID: 10018**
Videos: 1
Images: 0
- ID: 10020**
Videos: 1
Images: 1
- ID: 10021**
Videos: 1
Images: 1



Gallery



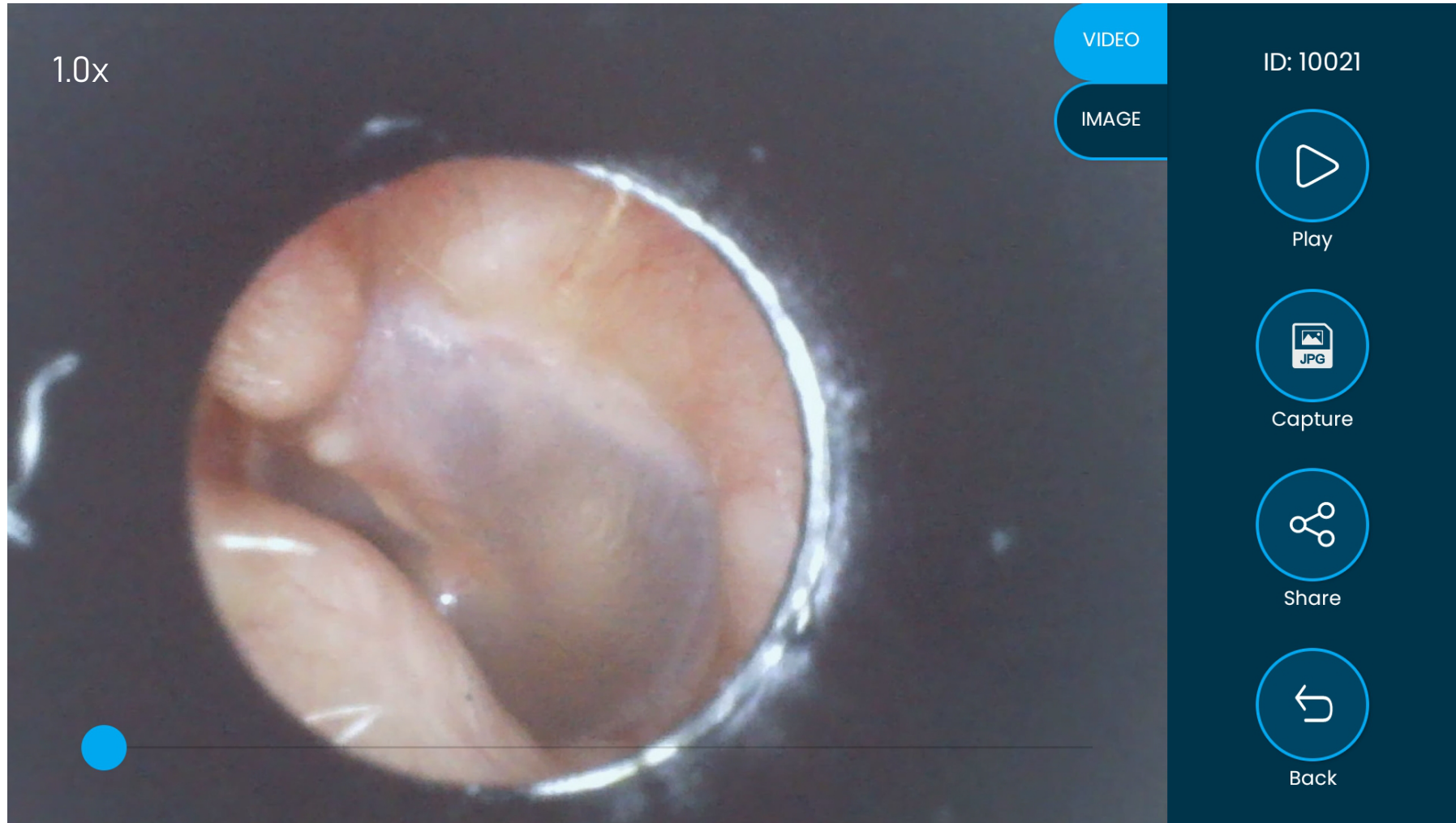
Home



REPLAY / GALLERY

You can replay or use the slider to view the videos. You can capture JPG snapshots from the videos.

You can share recordings via the share button.



The interface displays a video player with a circular endoscopic view of internal tissue. The magnification is set to 1.0x. The control panel on the right includes a 'VIDEO' tab (selected), an 'IMAGE' tab, and a 'JPG' icon for capturing snapshots. Below these are buttons for 'Play', 'Share', and 'Back'. The video ID 'ID: 10021' is displayed in the top right corner. A blue dot on the bottom left indicates the current video position in a sequence.

